

Sei Solo a Violino senza Basso accompagnato

Sonata P.ma [sol minore - BWV 1001]
Adagio – Fuga/Allegro – Siciliana – Presto

p. 6



Partia P.ma [si minore - BWV 1002]

» 16

Allemanda – Double – Corrente – Double/Presto – Sarabande – Double – Tempo di Borea – Double



Sonata 2.da [la minore - BWV 1003]
Grave – Fuga – Andante – Allegro

» 28



Partia 2.da [re minore - BWV 1004]

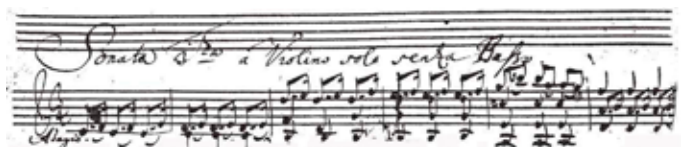
» 40

Allemanda – Corrente – Sarabanda – Giga – Ciaccona



Sonata 3.za [Do maggiore - BWV 1005]
Adagio – Fuga – Largo – Allegro assai

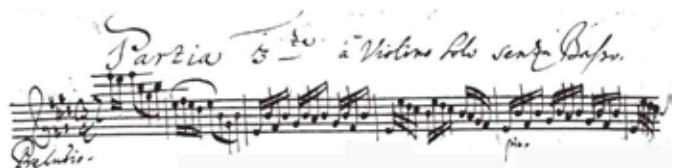
» 54



Partia 3.za [Mi Maggiore - BWV 1006]

» 68

Preludio – Loure – Gavotte en Rondeau – Menuet I – Menuet II – Bourée



Sonata I

BWV 1001

Adagio

2

3

5

7

9

10

64

66

68

70

72

74

76

78

80

Double
Presto

Musical score for Double Presto, measures 1-40. The score is written in 3/4 time and G major. It consists of ten staves of music. The first staff (measures 1-4) is in bass clef. The second staff (measures 4-8) is in bass clef. The third staff (measures 8-11) is in bass clef. The fourth staff (measures 11-14) is in treble clef. The fifth staff (measures 14-17) is in bass clef. The sixth staff (measures 17-20) is in bass clef. The seventh staff (measures 20-23) is in bass clef. The eighth staff (measures 23-26) is in bass clef. The ninth staff (measures 26-29) is in bass clef. The tenth staff (measures 29-32) is in bass clef. The eleventh staff (measures 32-35) is in bass clef. The twelfth staff (measures 35-39) is in bass clef. The thirteenth staff (measures 39-40) is in bass clef. The score features a variety of rhythmic patterns, including eighth and sixteenth notes, and rests. There are several accidentals, including sharps and naturals. A repeat sign is present at the beginning of the tenth staff. The key signature is G major, and the time signature is 3/4.

88 *arpeggio*

91

97

103

109

115

121

123

125